

ETM[®]

Elegant Technology Master

www.etm-co.com



○○○○
ELEGANT TECHNOLOGY MASTER

Your Electronic Hardware Solutions



Our name says it all, simply
the widest selection of
quality products.
We are specialize in cosmetic
products and precision
electronic hardware.

Your Electronic Hardware Solutions

ELEGANT TECHNOLOGY MASTER

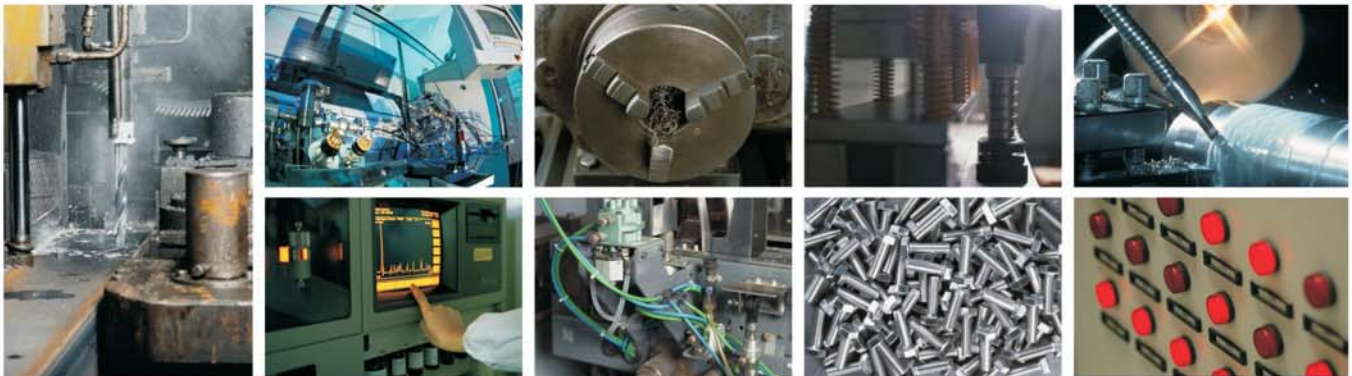


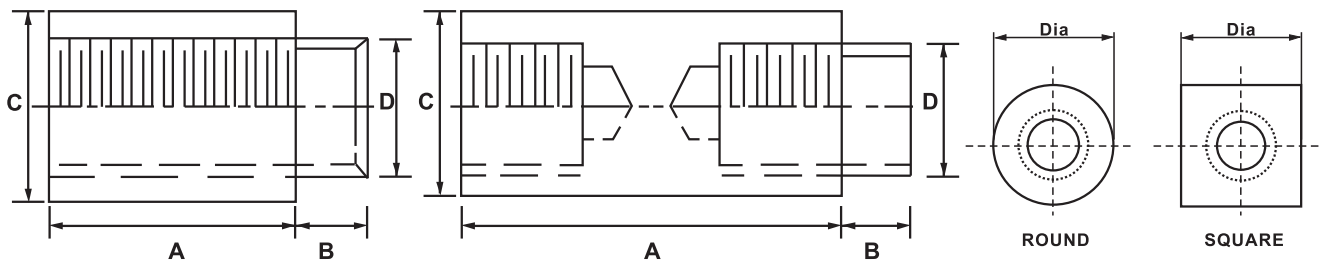
Our products meet most standard requirements. Modifications as well as custom fabrications can be manufactured to meet your special needs.

ETM has diverse manufacturing base that is available for you for specific, non standard designs.

Design and engineering, precision tool and die capabilities, close tolerance Stamping, Machining, and Assembly, computer based quality control and responsive customer service are all vital in-house resources which constitute our custom manufacturing division's capabilities.

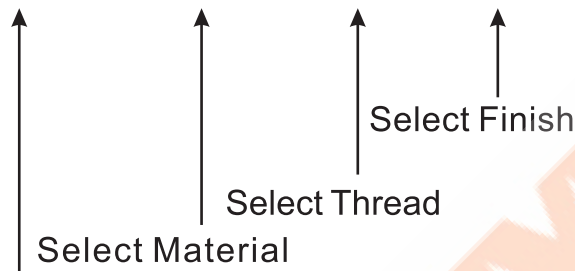
It is ETM's quality policy to continuously improve its products to better satisfy the needs of its customers and to deliver quality products, every time and on time. Our service team is your assurance of quick response, service and dependability, worldwide.





How to order American Standard Swage Standoffs

ASW- 51608-MS1- 632- S10



Tolerances:

Diameter: Standard commercial bar stock tolerances.

Length: 0 UP to 4" ± .005

From 4" to 6" ± .008

Over 6" ± .010

Threads:

External - Standard Unified Class 2A

Internal - Standard Unified Class 2B

Select Part No. corresponding to the diameter and length necessary for Your application

Material Description	Code	
	Round	Square
Carbon Steel	MS1	MS2
300 Series Stainless Steel	MSS1	MSS2
Aluminum	MA1	MA2
Brass	MB1	MB2
Nylon	MN1	MN2

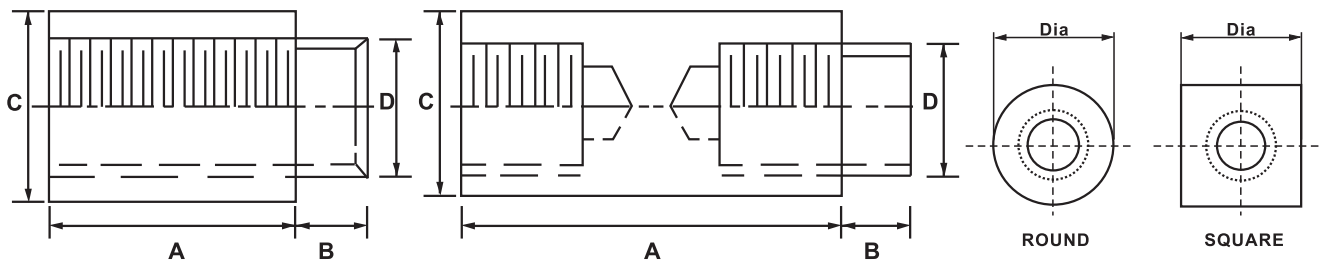
Finish Description	Code
Nickel Plate	S1
Chrome Plate	S2
Satin Chrome	S6
Zinc Plate	S10
Zinc Yellow Chromate	S11
No Finish	S14
Black Oxide	S22
Black Zinc	S23
Passivate	SB5
Anodize Clear	SA1
Glossy Anodize Clear	SA2
Anodize Black	SA3
Glossy Anodize Black	SA4
Clear Iridite	SA5

Code	Thread
080	0-80
256	2-56
348	3-48
440	4-40
632	6-32
832	8-32
1032	10-32

Code	Shank Length	Board Thickness
A	0.075	0.031
B	0.105	0.063
C	0.135	0.094
D	0.165	0.125
E	0.230	0.188
F	0.290	0.250

Custom modified products are available.

TEL:886.4.7369788 FAX:886.4.22569335 <http://www.etm-co.com>



1/8" Diameter Swage Standoffs

Part No.	Length	Part No.	Length	Part No.	Length
ASW-1801	3/32	ASW-1811	13/32	ASW-1821	23/32
ASW-1802	1/8	ASW-1812	7/16	ASW-1822	3/4
ASW-1803	5/32	ASW-1813	15/32	ASW-1823	25/32
ASW-1804	3/16	ASW-1814	1/2	ASW-1824	13/16
ASW-1805	7/32	ASW-1815	17/32	ASW-1825	27/32
ASW-1806	1/4	ASW-1816	9/16	ASW-1826	7/8
ASW-1807	9/32	ASW-1817	19/32	ASW-1827	29/32
ASW-1808	5/16	ASW-1818	5/8	ASW-1828	15/16
ASW-1809	11/32	ASW-1819	21/32	ASW-1829	31/32
ASW-1810	3/8	ASW-1820	11/16	ASW-1830	1

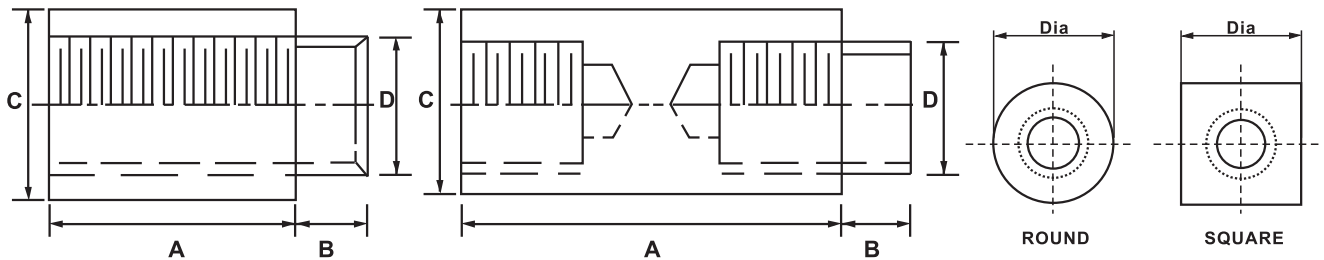
5/32" Diameter Swage Standoffs

Part No.	Length	Part No.	Length	Part No.	Length
ASW-53201	3/32	ASW-53211	13/32	ASW-53221	23/32
ASW-53202	1/8	ASW-53212	7/16	ASW-53222	3/4
ASW-53203	5/32	ASW-53213	15/32	ASW-53223	25/32
ASW-53204	3/16	ASW-53214	1/2	ASW-53224	13/16
ASW-53205	7/32	ASW-53215	17/32	ASW-53225	27/32
ASW-53206	1/4	ASW-53216	9/16	ASW-53226	7/8
ASW-53207	9/32	ASW-53217	19/32	ASW-53227	29/32
ASW-53208	5/16	ASW-53218	5/8	ASW-53228	15/16
ASW-53209	11/32	ASW-53219	21/32	ASW-53229	31/32
ASW-53210	3/8	ASW-53220	11/16	ASW-53230	1

3/16" Diameter Swage Standoffs

Part No.	Length	Part No.	Length	Part No.	Length
ASW-31601	3/32	ASW-31611	13/32	ASW-31621	23/32
ASW-31602	1/8	ASW-31612	7/16	ASW-31622	3/4
ASW-31603	5/32	ASW-31613	15/32	ASW-31623	25/32
ASW-31604	3/16	ASW-31614	1/2	ASW-31624	13/16
ASW-31605	7/32	ASW-31615	17/32	ASW-31625	27/32
ASW-31606	1/4	ASW-31616	9/16	ASW-31626	7/8
ASW-31607	9/32	ASW-31617	19/32	ASW-31627	29/32
ASW-31608	5/16	ASW-31618	5/8	ASW-31628	15/16
ASW-31609	11/32	ASW-31619	21/32	ASW-31629	31/32
ASW-31610	3/8	ASW-31620	11/16	ASW-31630	1

America Standard



1/4" Diameter Swage Standoffs

Part No.	Length	Part No.	Length	Part No.	Length
ASW-1401	3/32	ASW-1417	19/32	ASW-1433	1-3/16
ASW-1402	1/8	ASW-1418	5/8	ASW-1434	1-1/4
ASW-1403	5/32	ASW-1419	21/32	ASW-1435	1-5/16
ASW-1404	3/16	ASW-1420	11/16	ASW-1436	1-3/8
ASW-1405	7/32	ASW-1421	23/32	ASW-1437	1-7/16
ASW-1406	1/4	ASW-1422	3/4	ASW-1438	1-1/2
ASW-1407	9/32	ASW-1423	25/32	ASW-1439	1-9/16
ASW-1408	5/16	ASW-1424	13/16	ASW-1440	1-5/8
ASW-1409	11/32	ASW-1425	27/32	ASW-1441	1-11/16
ASW-1410	3/8	ASW-1426	7/8	ASW-1442	1-3/4
ASW-1411	13/32	ASW-1427	29/32	ASW-1443	1-13/16
ASW-1412	7/16	ASW-1428	15/16	ASW-1444	1-7/8
ASW-1413	15/32	ASW-1429	31/32	ASW-1445	1-15/16
ASW-1414	1/2	ASW-1430	1	ASW-1446	2
ASW-1415	17/32	ASW-1431	1-1/16		
ASW-1416	9/16	ASW-1432	1-1/8		

5/16" Diameter Swage Standoffs

Part No.	Length	Part No.	Length	Part No.	Length
ASW-51601	3/32	ASW-51617	19/32	ASW-51633	1-3/16
ASW-51602	1/8	ASW-51618	5/8	ASW-51634	1-1/4
ASW-51603	5/32	ASW-51619	21/32	ASW-51635	1-5/16
ASW-51604	3/16	ASW-51620	11/16	ASW-51636	1-3/8
ASW-51605	7/32	ASW-51621	23/32	ASW-51637	1-7/16
ASW-51606	1/4	ASW-51622	3/4	ASW-51638	1-1/2
ASW-51607	9/32	ASW-51623	25/32	ASW-51639	1-9/16
ASW-51608	5/16	ASW-51624	13/16	ASW-51640	1-5/8
ASW-51609	11/32	ASW-51625	27/32	ASW-51641	1-11/16
ASW-51610	3/8	ASW-51626	7/8	ASW-51642	1-3/4
ASW-51611	13/32	ASW-51627	29/32	ASW-51643	1-13/16
ASW-51612	7/16	ASW-51628	15/16	ASW-51644	1-7/8
ASW-51613	15/32	ASW-51629	31/32	ASW-51645	1-15/16
ASW-51614	1/2	ASW-51630	1	ASW-51646	2
ASW-51615	17/32	ASW-51631	1-1/16		
ASW-51616	9/16	ASW-51632	1-1/8		

3/8" Diameter Swage Standoffs

Part No.	Length	Part No.	Length	Part No.	Length
ASW-3801	3/32	ASW-3817	19/32	ASW-3833	1-3/16
ASW-3802	1/8	ASW-3818	5/8	ASW-3834	1-1/4
ASW-3803	5/32	ASW-3819	21/32	ASW-3835	1-5/16
ASW-3804	3/16	ASW-3820	11/16	ASW-3836	1-3/8
ASW-3805	7/32	ASW-3821	23/32	ASW-3837	1-7/16
ASW-3806	1/4	ASW-3822	3/4	ASW-3838	1-1/2
ASW-3807	9/32	ASW-3823	25/32	ASW-3839	1-9/16
ASW-3808	5/16	ASW-3824	13/16	ASW-3840	1-5/8
ASW-3809	11/32	ASW-3825	27/32	ASW-3841	1-11/16
ASW-3810	3/8	ASW-3826	7/8	ASW-3842	1-3/4
ASW-3811	13/32	ASW-3827	29/32	ASW-3843	1-13/16
ASW-3812	7/16	ASW-3828	15/16	ASW-3844	1-7/8
ASW-3813	15/32	ASW-3829	31/32	ASW-3845	1-15/16
ASW-3814	1/2	ASW-3830	1	ASW-3846	2
ASW-3815	17/32	ASW-3831	1-1/16		
ASW-3816	9/16	ASW-3832	1-1/8		

Custom modified products are available.



Our name says it all, simply the widest selection of quality products.

We are specialize in cosmetic products and precision electronic hardware.

Whether you are in the Aerospace, Automotive, Trucks, Railway, Enclosures, Enterprise Hardware, Consumer Electronics, Medical, Industrial Equipment, Marine, Instrumentation, Telecommunication, Recreational Vehicles, or other high-tech industry, our expert sales staff can assist you.

This book is a comprehensive reference of engineered human touch points for your customer oriented design solution. We believe that by providing you with a broad range of standard solutions. We can enhance your overall design, quality, performance, look and feel of your end product.



We have more and more products do not be listed in this catalogue, like ours Stamping Parts, Compression Latch, Draw Latch, Pulls, Self-Clinching parts ...etc.

To contact ETM directly for customer service and technical support, or contact us to found your local Sales Representative.

No.55, Ju Dong Rd., Homei Chang Hwa 50856, Taiwan, R.O.C.

TEL:886.4.7369788 FAX:886.4.22569335

<http://www.etm-co.com> E-mail: info@etm-co.com

TEL:886.4.7369788 FAX:886.4.22569335 <http://www.etm-co.com>



Sales

Headquarters ETM Inc.

No.55, Ju Dong Rd.,Homei Chang
Hwa 50856, Taiwan, R.O.C.

TEL:886.4.7369788

FAX:886.4.22569335

<http://www.etm-co.com>

USA UNICORP Inc.

291 Cleveland Street,
Orange, NJ 07050

TEL:+1.973.674.1700

FAX:+1.973.674.3803

<http://www.unicorpinc.com>