

ETM[®]

Elegant Technology Master

www.etm-co.com



○○○○
ELEGANT TECHNOLOGY MASTER

Your Electronic Hardware Solutions



Our name says it all, simply
the widest selection of
quality products.
We are specialize in cosmetic
products and precision
electronic hardware.

Your Electronic Hardware Solutions

ELEGANT TECHNOLOGY MASTER

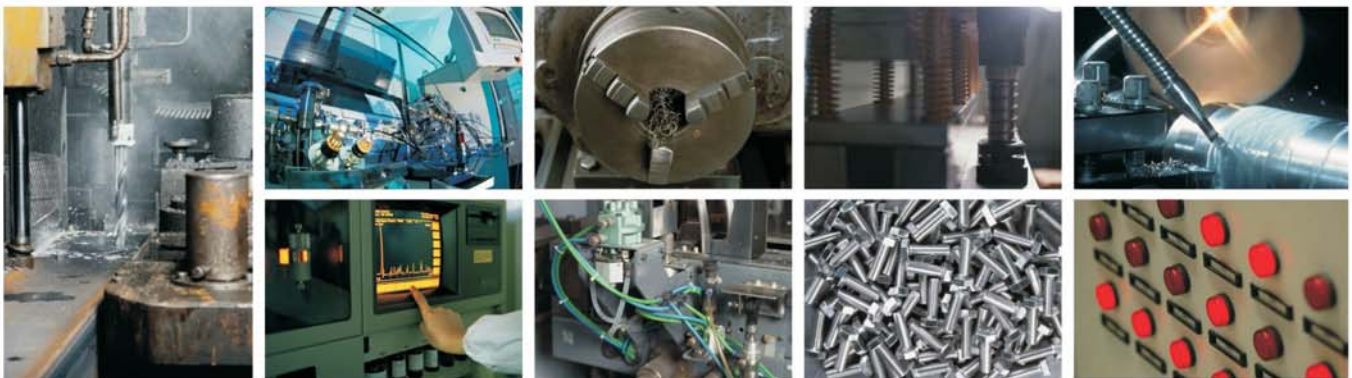


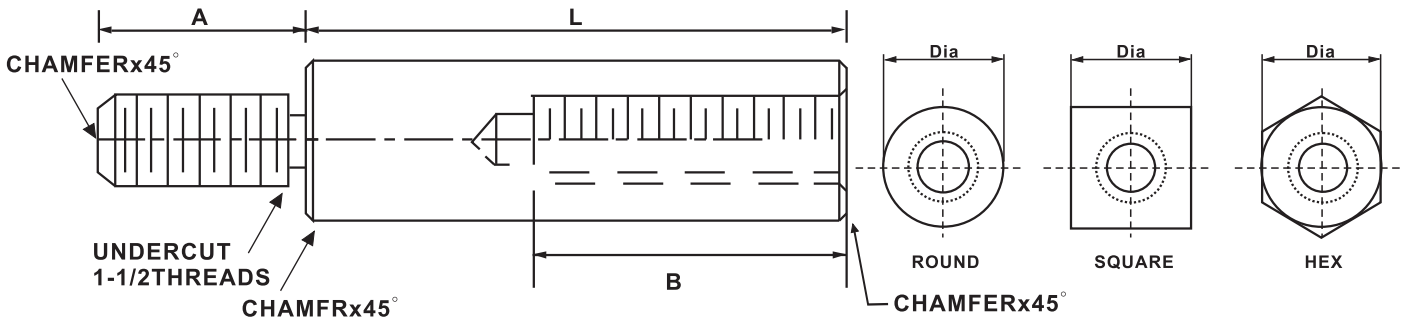
Our products meet most standard requirements. Modifications as well as custom fabrications can be manufactured to meet your special needs.

ETM has diverse manufacturing base that is available for you for specific, non standard designs.

Design and engineering, precision tool and die capabilities, close tolerance Stamping, Machining, and Assembly, computer based quality control and responsive customer service are all vital in-house resources which constitute our custom manufacturing division's capabilities.

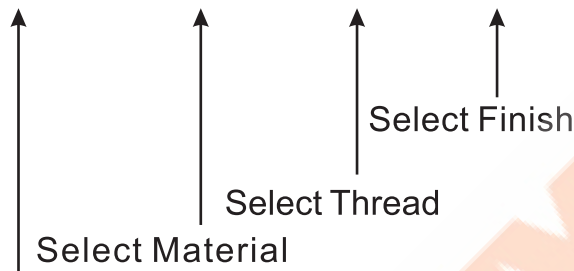
It is ETM's quality policy to continuously improve its products to better satisfy the needs of its customers and to deliver quality products, every time and on time. Our service team is your assurance of quick response, service and dependability, worldwide.





How to order American Standard Male-Female Standoffs

AMF- 31601-MS1- 256- S10



Tolerances:

Diameter: Standard commercial bar stock tolerances.
 Length: 0 UP to 4" ± .005
 From 4" to 6" ± .008
 Over 6" ± .010

Threads:

External - Standard Unified Class 2A
 Internal - Standard Unified Class 2B

Select Part No. corresponding to the diameter and length necessary for Your application

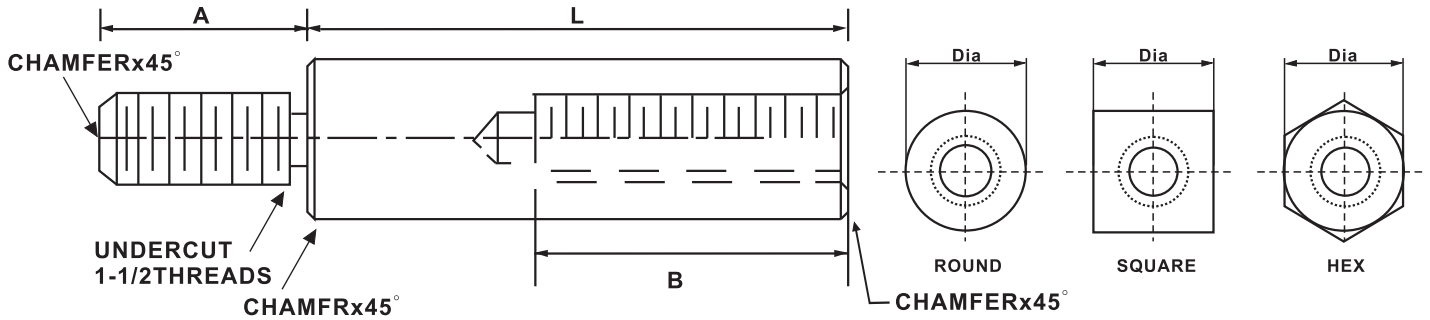
Material Description	Code		
	Round	Square	Hex
Carbon Steel	MS1	MS2	MS3
300 Series Stainless Steel	MSS1	MSS2	MSS3
Aluminum	MA1	MA2	MA3
Brass	MB1	MB2	MB3
Nylon	MN1	MN2	MN3

Finish Description	Code
Nickel Plate	S1
Chrome Plate	S2
Satin Chrome	S6
Zinc Plate	S10
Zinc Yellow Chromate	S11
No Finish	S14
Black Oxide	S22
Black Zinc	S23
Passivate	SB5
Anodize Clear	SA1
Glossy Anodize Clear	SA2
Anodize Black	SA3
Glossy Anodize Black	SA4
Clear Iridite	SA5

Code	Thread	A	B
256	2-56	5/32	3/16
440	4-40	3/16	1/4
632	6-32	1/4	3/8
832	8-32	3/8	7/16
1032	10-32	3/8	1/2
1224	12-24	1/2	9/16
1420	1/4-20	1/2	9/16
51618	5/16-18	9/16	9/16

Lengths "B" will be tapped to maximum depth.

America Standard



3/16" Diameter Male-Female Standoffs

Part No.	Length	Part No.	Length	Part No.	Length
AMF-31601	5/32	AMF-31616	5/8	AMF-31631	1-3/16
AMF-31602	3/16	AMF-31617	21/32	AMF-31632	1-1/4
AMF-31603	7/32	AMF-31618	11/16	AMF-31633	1-5/16
AMF-31604	1/4	AMF-31619	23/32	AMF-31634	1-3/8
AMF-31605	9/32	AMF-31620	3/4	AMF-31635	1-7/16
AMF-31606	5/16	AMF-31621	25/32	AMF-31636	1-1/2
AMF-31607	11/32	AMF-31622	13/16	AMF-31637	1-9/16
AMF-31608	3/8	AMF-31623	27/32	AMF-31638	1-5/8
AMF-31609	13/32	AMF-31624	7/8	AMF-31639	1-11/16
AMF-31610	7/16	AMF-31625	29/32	AMF-31640	1-3/4
AMF-31611	15/32	AMF-31626	15/16	AMF-31641	1-13/16
AMF-31612	1/2	AMF-31627	31/32	AMF-31642	1-7/8
AMF-31613	17/32	AMF-31628	1	AMF-31643	1-15/16
AMF-31614	9/16	AMF-31629	1-1/16	AMF-31644	2
AMF-31615	19/32	AMF-31630	1-1/8		

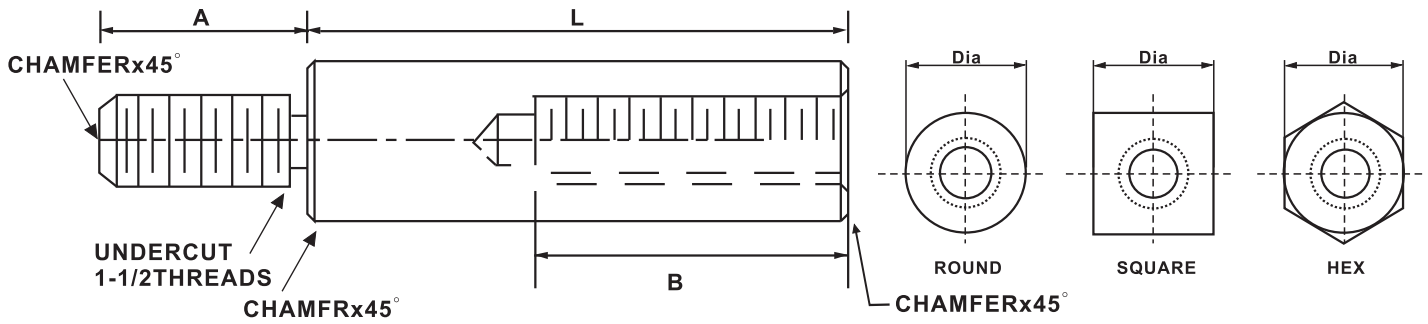
1/4" Diameter Male-Female Standoffs

Part No.	Length	Part No.	Length	Part No.	Length
AMF-1401	7/32	MFS-1419	25/32	AMF-1437	1-11/16
AMF-1402	1/4	MFS-1420	13/16	AMF-1438	1-3/4
AMF-1403	9/32	MFS-1421	27/32	AMF-1439	1-13/16
AMF-1404	5/16	MFS-1422	7/8	AMF-1440	1-7/8
AMF-1405	11/32	MFS-1423	29/32	AMF-1441	1-15/16
AMF-1406	3/8	MFS-1424	15/16	AMF-1442	2
AMF-1407	13/32	MFS-1425	31/32	AMF-1443	2-1/8
AMF-1408	7/16	MFS-1426	1	AMF-1444	2-1/4
AMF-1409	15/32	MFS-1427	1-1/16	AMF-1445	2-3/8
AMF-1410	1/2	MFS-1428	1-1/8	AMF-1446	2-1/2
AMF-1411	17/32	MFS-1429	1-3/16	AMF-1447	2-5/8
AMF-1412	9/16	MFS-1430	1-1/4	AMF-1448	2-3/4
AMF-1413	19/32	MFS-1431	1-5/16	AMF-1449	2-7/8
AMF-1414	5/8	MFS-1432	1-3/8	AMF-1450	3
AMF-1415	21/32	MFS-1433	1-7/16	AMF-1451	3-1/4
AMF-1416	11/16	MFS-1434	1-1/2	AMF-1452	3-1/2
AMF-1417	23/32	MFS-1435	1-9/16	AMF-1453	3-3/4
AMF-1418	3/4	MFS-1436	1-5/8	AMF-1454	4

Custom modified products are available.

TEL:886.4.7369788 FAX:886.4.22569335 <http://www.etm-co.com>

America Standard



5/16" Diameter Male-Female Standoffs

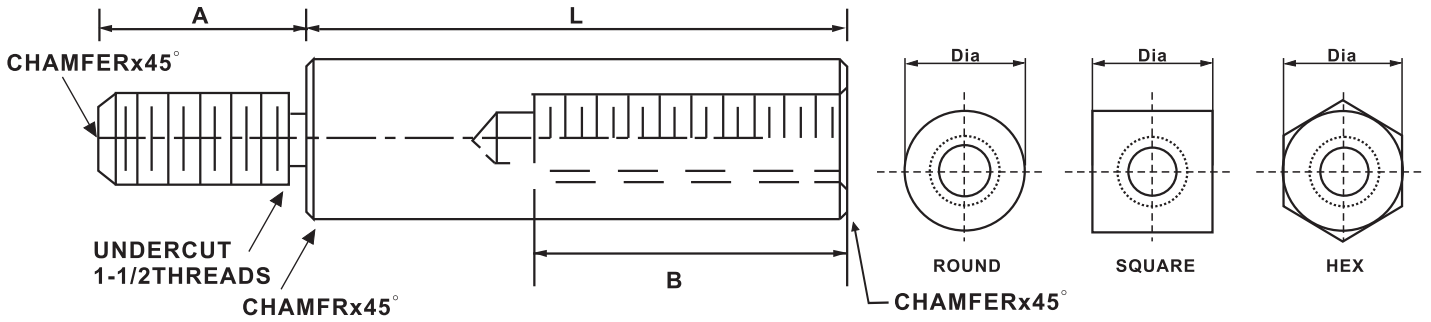
Part No.	Length	Part No.	Length	Part No.	Length
AMF-51601	7/32	AMF-51622	7/8	AMF-51643	2-1/8
AMF-51602	1/4	AMF-51623	29/32	AMF-51644	2-1/4
AMF-51603	9/32	AMF-51624	15/16	AMF-51645	2-3/8
AMF-51604	5/16	AMF-51625	31/32	AMF-51646	2-1/2
AMF-51605	11/32	AMF-51626	1	AMF-51647	2-5/8
AMF-51606	3/8	AMF-51627	1-1/16	AMF-51648	2-3/4
AMF-51607	13/32	AMF-51628	1-1/8	AMF-51649	2-7/8
AMF-51608	7/16	AMF-51629	1-3/16	AMF-51650	3
AMF-51609	15/32	AMF-51630	1-1/4	AMF-51651	3-1/4
AMF-51610	1/2	AMF-51631	1-5/16	AMF-51652	3-1/2
AMF-51611	17/32	AMF-51632	1-3/8	AMF-51653	3-3/4
AMF-51612	9/16	AMF-51633	1-7/16	AMF-51654	4
AMF-51613	19/32	AMF-51634	1-1/2	AMF-51655	4-1/4
AMF-51614	5/8	AMF-51635	1-9/16	AMF-51656	4-1/2
AMF-51615	21/32	AMF-51636	1-5/8	AMF-51657	4-3/4
AMF-51616	11/16	AMF-51637	1-11/16	AMF-51658	5
AMF-51617	23/32	AMF-51638	1-3/4	AMF-51659	5-1/4
AMF-51618	3/4	AMF-51639	1-13/16	AMF-51660	5-1/2
AMF-51619	25/32	AMF-51640	1-7/8	AMF-51661	5-3/4
AMF-51620	13/16	AMF-51641	1-15/16	AMF-51662	6
AMF-51621	27/32	AMF-51642	2		

3/8" Diameter Male-Female Standoffs

Part No.	Length	Part No.	Length	Part No.	Length
AMF-3801	7/32	AMF-3822	7/8	AMF-3843	2-1/8
AMF-3802	1/4	AMF-3823	29/32	AMF-3844	2-1/4
AMF-3803	9/32	AMF-3824	15/16	AMF-3845	2-3/8
AMF-3804	5/16	AMF-3825	31/32	AMF-3846	2-1/2
AMF-3805	11/32	AMF-3826	1	AMF-3847	2-5/8
AMF-3806	3/8	AMF-3827	1-1/16	AMF-3848	2-3/4
AMF-3807	13/32	AMF-3828	1-1/8	AMF-3849	2-7/8
AMF-3808	7/16	AMF-3829	1-3/16	AMF-3850	3
AMF-3809	15/32	AMF-3830	1-1/4	AMF-3851	3-1/4
AMF-3810	1/2	AMF-3831	1-5/16	AMF-3852	3-1/2
AMF-3811	17/32	AMF-3832	1-3/8	AMF-3853	3-3/4
AMF-3812	9/16	AMF-3833	1-7/16	AMF-3854	4
AMF-3813	19/32	AMF-3834	1-1/2	AMF-3855	4-1/4
AMF-3814	5/8	AMF-3835	1-9/16	AMF-3856	4-1/2
AMF-3815	21/32	AMF-3836	1-5/8	AMF-3857	4-3/4
AMF-3816	11/16	AMF-3837	1-11/16	AMF-3858	5
AMF-3817	23/32	AMF-3838	1-3/4	AMF-3859	5-1/4
AMF-3818	3/4	AMF-3839	1-13/16	AMF-3860	5-1/2
AMF-3819	25/32	AMF-3840	1-7/8	AMF-3861	5-3/4
AMF-3820	13/16	AMF-3841	1-15/16	AMF-3862	6
AMF-3821	27/32	AMF-3842	2		

[Custom modified products are available.](#)

America Standard



1/2" Diameter Male-Female Standoffs

Part No.	Length	Part No.	Length	Part No.	Length
AMF-1201	7/32	AMF-1222	7/8	AMF-1243	2-1/8
AMF-1202	1/4	AMF-1223	29/32	AMF-1244	2-1/4
AMF-1203	9/32	AMF-1224	15/16	AMF-1245	2-3/8
AMF-1204	5/16	AMF-1225	31/32	AMF-1246	2-1/2
AMF-1205	11/32	AMF-1226	1	AMF-1247	2-5/8
AMF-1206	3/8	AMF-1227	1-1/16	AMF-1248	2-3/4
AMF-1207	13/32	AMF-1228	1-1/8	AMF-1249	2-7/8
AMF-1208	7/16	AMF-1229	1-3/16	AMF-1250	3
AMF-1209	15/32	AMF-1230	1-1/4	AMF-1251	3-1/4
AMF-1210	1/2	AMF-1231	1-5/16	AMF-1252	3-1/2
AMF-1211	17/32	AMF-1232	1-3/8	AMF-1253	3-3/4
AMF-1212	9/16	AMF-1233	1-7/16	AMF-1254	4
AMF-1213	19/32	AMF-1234	1-1/2	AMF-1255	4-1/4
AMF-1214	5/8	AMF-1235	1-9/16	AMF-1256	4-1/2
AMF-1215	21/32	AMF-1236	1-5/8	AMF-1257	4-3/4
AMF-1216	11/16	AMF-1237	1-11/16	AMF-1258	5
AMF-1217	23/32	AMF-1238	1-3/4	AMF-1259	5-1/4
AMF-1218	3/4	AMF-1239	1-13/16	AMF-1260	5-1/2
AMF-1219	25/32	AMF-1240	1-7/8	AMF-1261	5-3/4
AMF-1220	13/16	AMF-1241	1-15/16	AMF-1262	6
AMF-1221	27/32	AMF-1242	2		

[Custom modified products are available.](#)



Sales

Headquarters ETM Inc.

No.55, Ju Dong Rd.,Homei Chang
Hwa 50856,Taiwan, R.O.C.

TEL:886.4.7369788

FAX:886.4.22569335

<http://www.etm-co.com>

USA UNICORP Inc.

291 Cleveland Street,
Orange,NJ 07050

TEL:+1.973.674.1700

FAX:+1.973.674.3803

<http://www.unicorpinc.com>